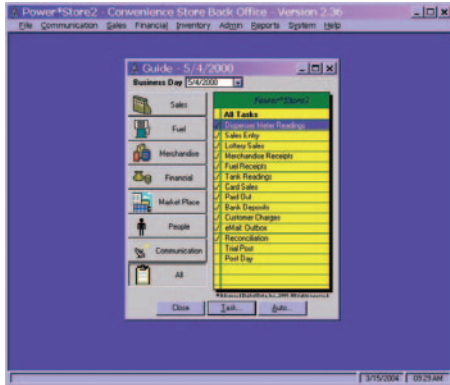


Power*Store2®

Power*Store2® is a Store Manager's Work Station that is designed around a "task pad" concept for ease of use. The "task Pad" is user defined, based on the data required by the home office for that particular store. The Task pad can easily walk the manager through with the "auto data entry" feature. The data transmitted to the home office includes: merchandise sales, inventory, financials, lottery, payroll, deliveries, and competitive prices. With the combination of the POS interface for gathering sales data, and the Power*Scan handheld scanner for collection of Direct Store Deliveries, very little manual data entry is required on the part of the store manager to complete his daily work. The system has been designed to automate the store manager's daily activities in order to improve efficiency and productivity.

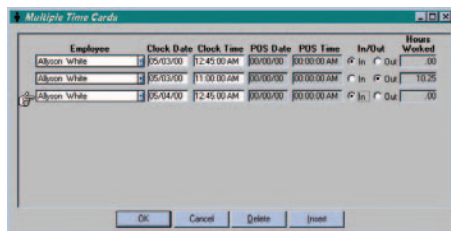


Scanning

Power Store supports scanning and accommodates the 24-character UPC code. It sends item-level inventory information to the home office. Power*Store2 is built with Sybase SQL Anywhere, a standard relational database. Reports can be designed using Power*Store2's recommended report writer tool—Info maker. With this data accessibility, managers, regional / area supervisors can use the item-level sales statistics to observe trends, determine the best use of shelf space, forecast sales on merchandise, and better manage initiatives such as Customer Loyalty programs. There are a multitude of reports that can be generated with this kind of access to data.

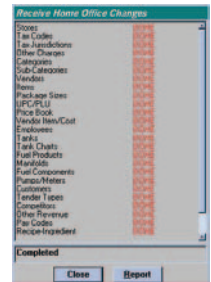
Payroll Data

Power*Store2 provides a password protected time card feature, which allows a store employee to punch in and out without gaining access to Power*Store2's back office software. If your POS supports a clock-in/clock-out feature, Power*Store2 can retrieve the time card information directly from the register. This time card data can be fed directly to the PAMS home office payroll system, or other payroll packages. Additionally, new employees can be added at the store level, or at the home office



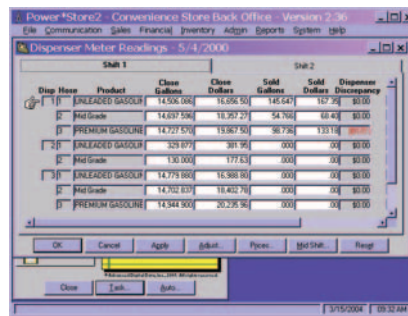
Communications

Power*Store2 acts as a communications command center, coordinating daily postings, and transferring information to and from the POS and Home Office. The communication of the Home office and the Point of Sale (POS) unit is "two-way". So data such as price changes, new products, new PLU's, UPC's and departments, can be sent to the register, eliminating the need to close the register to make price changes. Home office manages a central price book, maintaining an individual price book for each store. In addition, communication with the home office can be via phone or over the Internet. There is electronic communication with the merchandise vendor for data such as price changes, new items, and invoices, which is interfaced with Accounts Payable.



Fuel Inventory and Sales

Whether you have automated or mechanical pumps, Power*Store2 will record your sales and track inventory. Power*Store2 allows you to keep an accurate record of all fuel inventory by maintaining a tank chart for each location and each product. Power*Store2 records all deliveries, sales of fuel, prices, gallons, meter readings, stick readings, and data from tank monitors for EPA records. You also have the ability to make fuel price changes during a shift.



Merchandise Inventory and Sales

Accurate inventory records will help your business run more efficiently and reduce costs. Power*Store2 maintains merchandise inventory by recording all the sales/deliveries of merchandise. Our Handheld Scanner: Power*Scan is used for automating the process of collecting data from direct store deliveries and performing inventory audits that are fed to Power*Store2. The sales information is then transmitted to the home office for processing.

